

M|P|W

Schools and Colleges

---

# International Prospectus

2023/2024

---

[www.mpw.ac.uk](http://www.mpw.ac.uk)

LONDON  
BIRMINGHAM  
CAMBRIDGE

# Welcome to MPW

Welcome to Mander Portman Woodward (MPW), one of the UK's leading names in fifth and sixth-form education. Founded in 1973, our three colleges are strategically located in close proximity to leading universities in London, Birmingham and Cambridge.

We offer a distinctive alternative to traditional schools, with an approach defined by an outstanding level of individual support. Our classes are taught in small, Oxbridge-style groups, with a strong focus on exam preparation and extensive support throughout the university application process.

You can choose from a broad curriculum with A levels offered in over 40 subjects and prestigious university foundation programmes, including the prestigious NCUK International Foundation Year and UAL endorsed Foundation Diploma in Art and Design. Consistently outstanding results mean that our students progress to some of the best universities in the UK - in 2022, two-thirds of UK university placements were at Russell Group, University of London or specialist universities.

A diverse, friendly community, with a majority of British students, provides an ideal learning environment for you to establish the vital language and cultural skills needed to succeed at university and beyond. Outside of the classroom, we offer a range of desirable accommodation options, including full boarding in London at the newly refurbished Queen's Gate House.

We hope that you'll join us and follow in the footsteps of our alumni from around the world in succeeding with MPW in 2023 and beyond.

## Contents

|    |  |    |                                 |
|----|--|----|---------------------------------|
| 04 | London                                   | 28 | GCSE                            |
| 06 | MPW Boarding                             | 30 | Pre-programme                   |
| 08 | Birmingham                               | 31 | Pre-sessional English Programme |
| 10 | KSS Birmingham                           | 32 | Oxbridge                        |
| 12 | Cambridge                                | 34 | Medicine                        |
| 14 | KSS Cambridge                            | 37 | Easter Revision                 |
| 16 | Results and Destinations                 | 38 | Enrichment and Extracurricular  |
| 18 | A levels                                 | 40 | Summer School 2023              |
| 20 | Foundation (NCUK)                        | 42 | How to Apply                    |
| 22 | UAL Foundation Diploma in Art and Design | 43 | Fees                            |
| 25 | Art Portfolio Programme                  |    |                                 |
| 26 | Foundation (UFP)                         |    |                                 |



A levels, GCSE, University Foundation, Easter Revision



Maximum nine students in A level classes



Top grades in government inspection reports



Supervised accommodation within walking distance of each college



Personal tutor system, supervising welfare and academic progress



70% UK and 30% international students

# MPW London

MPW London is located in South Kensington (Zone 1), one of the most exclusive and affluent parts of the capital.

MPW London is just a few minutes' walk from Hyde Park, Imperial College and many world-famous museums, including the Science Museum, the Natural History Museum and the Victoria & Albert Museum.

- A level
- GCSE
- UAL Foundation Diploma in Art and Design
- NCUK International Foundation Year
- MPW University Foundation Programme
- Art Portfolio Preparation Programme
- Pre-programme
- Easter Revision



*The Principal*  
**Steve Boyes**

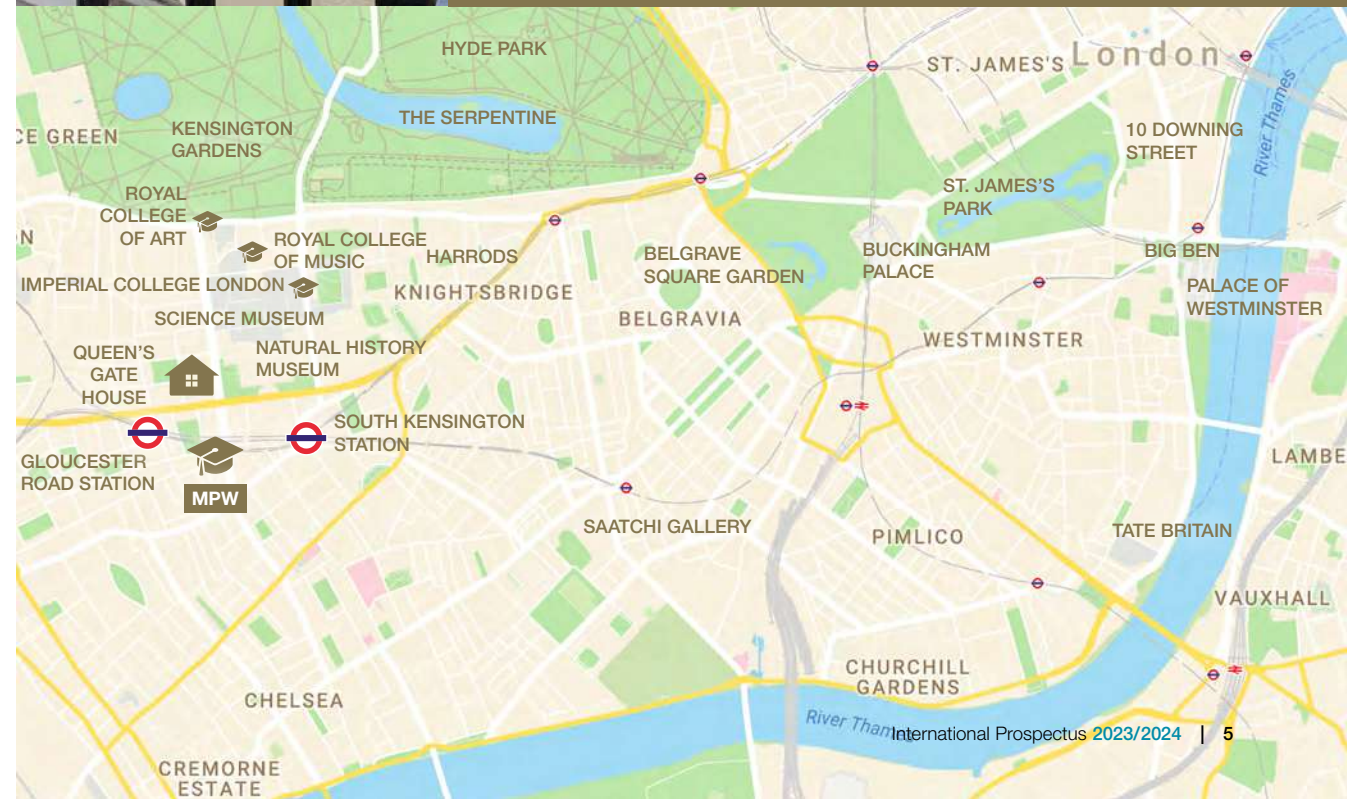
Steve Boyes BA, MSc, PGCE read Geography at Lancaster University and went on to postgraduate research in Employment Law at Durham University. He is a former Chairman of CIFE, the professional association for independent sixth-form colleges, an inspector for the Independent Schools Inspectorate and a former governor of an independent school in Sussex.

## Inspection Reports

*MPW London, Excellent*  
**ISI**

“Students make rapid progress from their various starting points, in small-sized classes, due to highly effective specialist teaching and closely focused pastoral support”

**100%**



# MPW Boarding

Our outstanding new boarding facility in the historic Queen's Gate House, offers full boarding for students aged 14 plus.

## Stylish and comfortable accommodation

Queen's Gate House has over 70 stylish self-contained rooms offering a comfortable space in which students can study and relax at the end of the school day. Each room features an en-suite bathroom, small double bed, individual temperature control (with air conditioning), desk and storage.

Our large canteen offers a diverse menu of quality food, available morning, noon and night. There are options to suit every taste, all produced by an award-winning caterer. It also provides a fantastic space for students to socialise and relax.

## A special location

Situated in the very heart of South Kensington, overlooking the Natural History Museum, Queen's Gate House is moments away from world-famous academic and cultural attractions.

These include Imperial College, the Royal College of Art and the Royal College of Music, museums for every interest (including the Science Museum and V&A) and the iconic Royal Albert Hall. Hyde Park, London's largest green space, sits at the end of the street, and the area has a thriving food and café culture.



## Features



24 hour staff



CCTV



Games



Meals inclusive



Large canteen and lounge



Ensuite bathroom



Bed linen provided



All bills inclusive



WiFi



# MPW Birmingham

Home to five universities and two university colleges, Birmingham is the UK's second largest student city.

With a mixture of new architecture and historic Victorian buildings, Birmingham is an energetic and evolving city, with nearly 40% of the population under 25.

MPW Birmingham is situated on Greenfield Crescent, in the leafy suburb of Edgbaston. The college is a short walk from Five Ways train station and is close to the city centre and the University of Birmingham campus. MPW students have easy access to the full range of world class facilities that Birmingham has to offer.

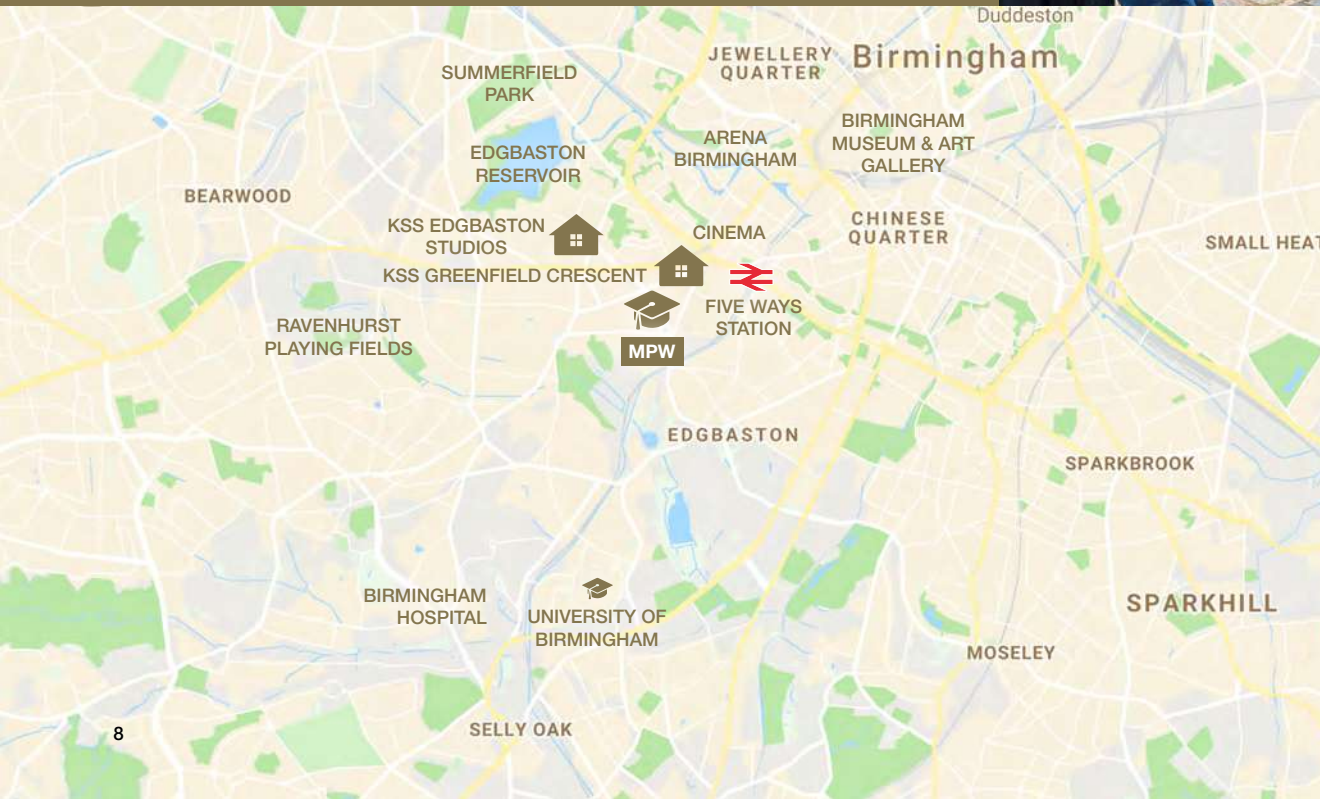


- A level
- GCSE
- NCUK International Foundation Year
- Pre-programme
- Easter Revision



“Everyone at the college, including the Principal, personal tutors, and the librarian create a comfortable environment for students to study. The tutors are always forthcoming with advice, highlighting specific areas I should approach carefully in my weekly Timed Assignments and final examinations.”

Tracy, from Hong Kong (SAR). Achieved A\*A\*AA at A level. Now studying Economics at the University of Warwick.



*The Principal*  
**Mark Shingleton**

Mark read International Business and French at the University of Westminster before obtaining a PGCE at the Institute of Education and an MA in Educational Leadership. He was Pastoral Director at Saint Charles Sixth Form College in London and Head of Sixth Form at Cokethorpe School in Oxfordshire before taking over as Principal of MPW Birmingham in 2009.

## Inspection Reports

*MPW Birmingham,  
Outstanding*

**OFSTED**

“Pupils have extremely positive attitudes to learning due to the high quality of teaching and individual support they receive. They work hard and are determined to succeed. Behaviour in lessons and around the school is exemplary.”

**100%**





# KSS Birmingham

Kensington Student Services (KSS) offers two comfortable and stylish student residences close to MPW Birmingham.

## Edgbaston Studios

Settle into student life at Edgbaston Studios with local cafés, green space and Birmingham's shops, bars and restaurants close by. This residence, exclusive to MPW Birmingham students, is located a short walk from the college, and one which many students return to for their second year. You can pick from a range of four studio formats depending on your needs and budget.

## Greenfield Crescent

Situated next door to MPW Birmingham, Greenfield Crescent lies in the heart of the newly regenerated Edgbaston Village, close to its many cafés, shops, restaurants and leisure facilities. Choose from a wide range of options from standard rooms with shared shower facilities, ensuite rooms with their own shower, through to fully self-contained studio flats.



## About KSS

Kensington Student Services (KSS) is a wholly owned subsidiary of MPW providing fully supervised student residences.

KSS takes pride in offering much more than just a room. Its friendly and experienced team in Birmingham cultivate a sense of community and belonging, as well as helping students to develop life skills and transition to independent living.

Visit the KSS website to find out more.



# MPW Cambridge

Cambridge is steeped in history – home to many beautiful museums and art galleries as well as the world-famous University of Cambridge (founded in 1209).

MPW Cambridge is located in the heart of the city, next door to the University of Cambridge Botanic Gardens as well as the University’s Engineering and Chemistry faculties. MPW is within a few minutes’ walk of many world famous university buildings, including King’s College and The Fitzwilliam Museum.

- A level
- GCSE
- NCUK International Foundation Year
- Pre-programme
- Easter Revision



“Two years of A levels in MPW Cambridge was a unique academic journey filled with unforgettable memories. With the help of friendly, supportive and professional staff in MPW, I enhanced my academic skills and got offers from the most prestigious universities.”

Ulan, from Kazakhstan. Achieved A\*A\*A at A level. Now reading Accounting and Finance at Warwick University.



*The Principal*  
**Tom Caston**

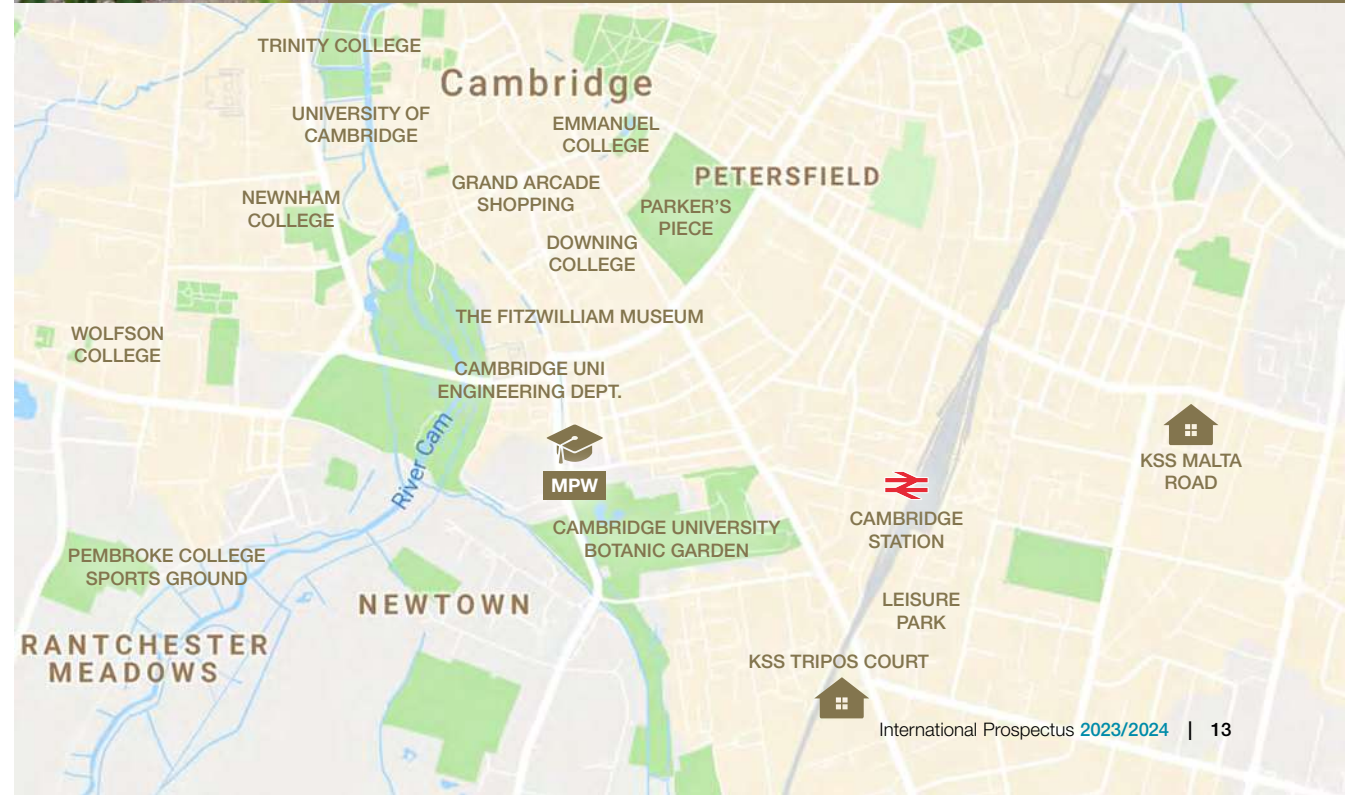
Tom read Geography at the University of Exeter and subsequently gained an MSc in Managing School Improvement from the University of Reading. He worked in investment banking before starting his teaching career at Shiplake College in 1999. Prior to joining MPW he held senior posts in a number of independent schools, most recently a Deputy Headship at Framlingham College.

## Inspection Reports

*MPW Cambridge,*  
**Outstanding**  
**OFSTED**

“Pupils and sixth-form students say that MPW is ‘amazing’ and a great place to study. They know what they want to get out of their studies and are exceptionally well motivated to learn.”

**100%**



# KSS Cambridge

Two fantastic residences are offered to MPW Cambridge students by Kensington Student Services (KSS).

## Triplos Court

Located a short walk from MPW Cambridge, Triplos Court is a superb gated community with ensuite rooms, shared laundry facilities and fantastic social spaces. Triplos Court is a secure, purpose-built student accommodation development with its own gardens, perfect for socialising on sunny days. It is also situated close to Cambridge Leisure Park, with its many shops, restaurants, music venue and cinema.

## Malta Road

Malta Road is situated in a highly desirable area, close to the vibrant Mill Road, home to artisan coffee shops, international supermarkets, restaurants and independent shops. A popular residence that many students choose for their second year, Malta Road comprises five terraced houses, providing a homely atmosphere with gardens, laundry facilities, and bike storage.



## About KSS

Kensington Student Services (KSS) is a wholly owned subsidiary of MPW providing fully supervised student residences.

KSS takes pride in offering much more than just a room. Its friendly and experienced team in Cambridge cultivate a sense of community and belonging, as well as helping students to develop life skills and transition to independent living.

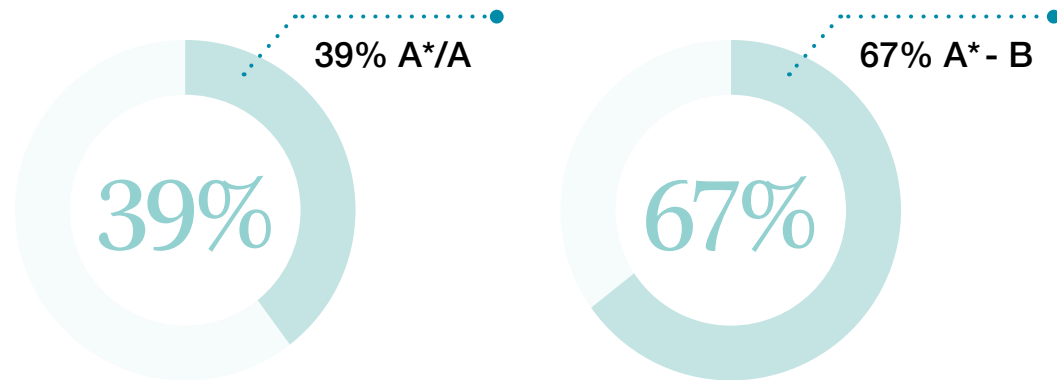
Visit the KSS website to find out more.



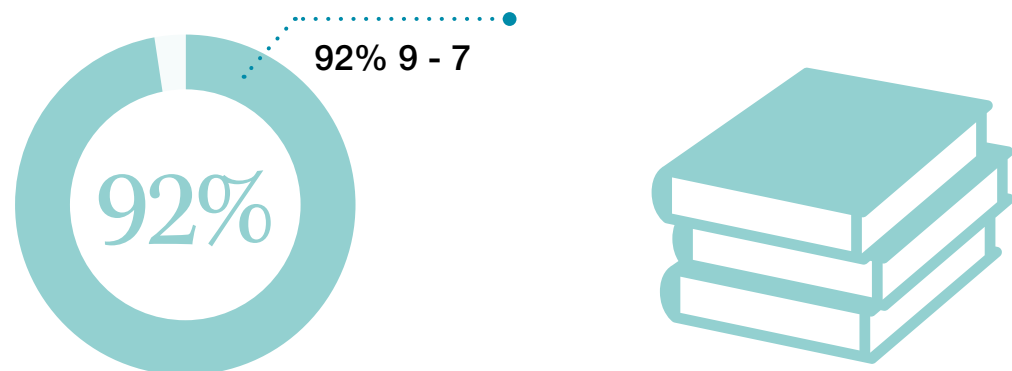


# Results and Destinations 2022

## A levels



## GCSE



# 67%

of MPW students' UK university placements were at Russell Group, specialist universities and other University of London colleges



All 24 Russell Group universities accepted MPW students in 2022

# 24

### Outstanding University Progression

Over the last five years, our students have progressed to some of the best universities and most prestigious courses in the UK and around the world.



Oxbridge

—  
**19**



Medicine

—  
**132**



Dentistry

—  
**26**



Veterinary

—  
**29**

Russell Group

# 1,108

# A Levels

MPW offers the most comprehensive choice of A level options of any academic institution in the UK.

Subjects are offered with no restrictions on combination or course length. Students normally take three subjects at A level, with the option of also taking the Extended Project Qualification (EPQ).

- Two-year A level (September start)
- 18-month A level (January start)
- One-year A level courses (September start)

## A Level Subjects

|                        |                       |                   |
|------------------------|-----------------------|-------------------|
| Ancient History        | French                | Music             |
| Art, Craft and Design  | Further Mathematics   | Philosophy        |
| Biology                | Geography             | Photography       |
| Business               | German                | Physics           |
| 3D Design/Ceramics     | Graphic Communication | Politics          |
| Chemistry              | Modern Greek          | Portuguese        |
| Chinese                | History               | Psychology        |
| Classical Civilisation | History of Art        | Religious Studies |
| Computer Science       | Italian               | Russian           |
| Economics              | Latin                 | Sociology         |
| English Language       | Law                   | Spanish           |
| English Literature     | Mathematics           | Textile Design    |
| Film Studies           | Media Studies         | Theatre Studies   |

Please check website for full listings.

## Academic Entry Requirements

Six GCSE passes at grade C or above or equivalent



### Quick facts



Age: 15+



Maximum class size: 9



Start dates:

September (two-year) – 5.5 IELTS  
 January (18-month) – 5.5 / 6.0 IELTS  
 September (one-year) – 6.0 IELTS

# NCUK International Foundation Year

The NCUK International Foundation Year is a modular programme that will prepare you for first-year entry to undergraduate degree courses.

NCUK is a consortium of leading UK universities dedicated to help international students achieve a place on a UK degree programme, and MPW is proud to be one of its largest providers. With the NCUK guarantee, you will get at least two conditional offers and – on successful completion of the programme – will be guaranteed a place at university.

## Quick facts

|   |  |   |
|---|--|---|
|  Age: 17+                        |  Maximum class size: 14                 |  Start date: September or January* |
|  Programme length: 2 or 3 terms |  Course hours: 21 or 28 hours per week |  Programme routes: Business       |
|  Programme routes: Engineering |  Programme routes: Humanities         |  Programme routes: Science       |

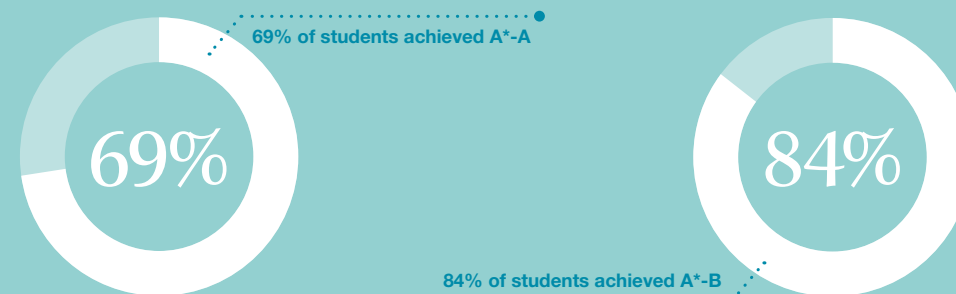
## Partner Universities

NCUK students can progress to leading universities in the UK (including those shown below), USA, Canada, Australia, New Zealand and more.

- Aston University, Birmingham
- University of Birmingham
- University of Bradford
- University of Bristol
- University of Huddersfield
- Leeds Beckett University
- Liverpool John Moores University
- University of Manchester
- Manchester Metropolitan University
- Queen Mary, University of London
- University of Salford, Manchester
- University of Sheffield
- Sheffield Hallam University
- University of Kent
- Kingston University London
- University of Leeds

\*January start available at MPW Birmingham and MPW Cambridge only.

## Results and Destinations 2022



Destination universities for 2022 included:

| Name         | Grades      | Nationality | University                  | Degree  |
|--------------|-------------|-------------|-----------------------------|---|
| Mia-Chloé    | Cameroonian | A*A*AA      | King's College London       | Business Management                                     |
| Kaviyamurugu | Malaysian   | A*AAA       | King's College London       | Biomedical Science                                      |
| Yuan-Ting    | Taiwanese   | A*A*A*C     | The University of Edinburgh | Artificial Intelligence & Computer Science              |
| Daniella     | Nigerian    | A*AA*A      | University of Leicester     | Economics   |
| Guan-Liang   | Taiwanese   | A*A*A*A     | University of Birmingham    | Business Management with Marketing and Year in Industry |
| Noemie       | Cameroonian | A*A*A*A*    | UCLAN                       | Medicine and Surgery                                    |
| Oscar        | Nigerian    | AA*A*A      | University of Birmingham    | Pharmacy  |

“MPW seemed to be a place that would be a home away from home which it has truly been. The small group classes were amazing for me as I've had more interaction with my teachers.”

Agatha, from Uganda. Achieved AA\*A\*-A. Now reading Biochemistry at the University of Birmingham.



## Academic Entry Requirements

Completion of 12 years of schooling (or local equivalent to meet the same standard) with good grades. Mathematics will be tested for all numerical and scientific routes.

English Language Level (September start): IELTS 5.5 or equivalent (with no less than 5.0 in any single band)

English Language Level (January start): IELTS 6.0 or equivalent (with no less than 5.5 in any single band)

Validating Body: Northern Consortium of UK Universities (NCUK)

Available at MPW London

# UAL Foundation Diploma in Art and Design

The UAL Foundation Diploma is your route to studying Art and Design at the UK's best universities. It offers you the opportunity to explore a wide range of art and design disciplines in preparation for your chosen degree.

Widely recognised and respected, this qualification is often used to progress to a variety of top creative arts schools and universities, including UAL. MPW London is a UAL Approved Centre for the delivery of the prestigious Foundation Diploma in Art and Design.

## Quick facts



Age: 17+



Maximum class size: 14



Start date: September



Course length: 1 academic year (3 terms)



Course hours: 15 hours per week

## Academic Entry Requirements

Five GCSEs (including Maths and English) at grade 4 or above or international equivalent (11 or 12 years of schooling completed with good grades and strong school report).

English Language Level: 5.0 IELTS or equivalent  
English language support is offered and timetabled to ensure admissions criteria of university destinations can be met.

**ual** awarding body

## Specialisms

The Diploma will introduce you to a wide variety of disciplines and methods, which will help you to explore and develop your own practice. You will then be able to focus on one of the following specialisms of your choice.



Art (Drawing and Painting)



Printmaking



Photography (Digital and Darkroom)



Textiles



3D Design/Ceramics



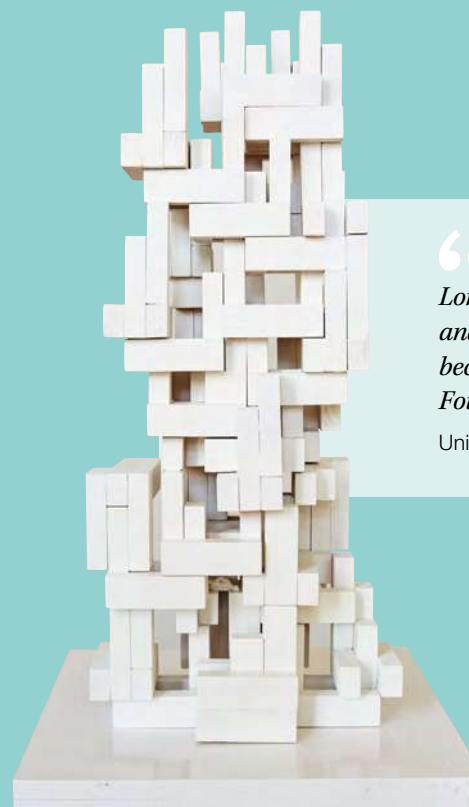
Architecture and Interior Design



Illustration



Fashion



“We are proud and delighted to announce that MPW London, one of the UK's best-known providers of bespoke fifth- and sixth-form education, offering GCSEs and A levels, has become a UAL Awarding Body approved Centre to deliver the Foundation Diploma in Art and Design.”

University of the Arts London (UAL) Awarding Body



“The teachers and classmates at MPW are very friendly and helpful. And the campus has a relaxed and creative learning atmosphere. Furthermore, I really like the location of MPW London, which allows me to visit many renowned galleries and museums at any time, and to participate in various art exhibitions to help me get inspired. The school’s art studio is the place where I stay most often – it provides me a quiet place to focus on my portfolio preparation.”

Angela, from Hong Kong. Progressed to UAL to read Textile Design.



### Creative Arts at MPW

Creative arts are an important part of life at MPW London. We have been running creative arts programmes for nearly half a century, earning an enviable reputation for the quality of our teaching and the excellence of our students’ work.

Our links with UAL and various other art-focused universities enable students to take part in workshops, lectures and portfolio reviews with senior academic staff. Combined with outstanding teaching facilities, dedicated tutors and a very popular annual art exhibition, it’s no surprise that our art students gain places on the most creative and competitive courses at art schools and universities.

MPW London’s location in the heart of South Kensington means it is just moments away from iconic cultural attractions, where students can immerse themselves in the very best of British and global art and culture.

These include the V&A, the world’s leading museum of art and design, the Saatchi Gallery, the Natural History Museum, the Royal College of Art, the Serpentine Gallery and the iconic Royal Albert Hall.

# Art Portfolio Preparation Programme

MPW has been offering creative arts courses for nearly half a century and has built up an enviable reputation for the quality of teaching and of our students’ work.

This one-year programme is the ideal route for students who aim to study art, design, fashion or photography at foundation level at university in the UK.

Taken alongside two creative arts courses at A level, the programme develops your skills and focuses on portfolio development, a key entry requirement for most specialist art schools and universities. Through weekly workshops, you will build a body of work to demonstrate your creativity and the ability to develop your ideas into coherent and finished pieces.

### Creative Arts Subjects

Art and Design

3D Design/Ceramics

Fine Art

Graphic Design

Photography

Textiles/Fashion

### Complementary Subjects

Business Studies\*

Film Studies

History of Art

Mathematics or Physics\*\*

Media Studies

Theatre Studies

\*if you are aiming for a degree subject such as Fashion Marketing

\*\*for students applying for Architecture

### Academic Entry Requirements

Successful completion of local high school (either 11 or 12 year system) with good grades

English Language Level:

- IELTS 5.5 or equivalent (with no less than 5.0 in any single band) if taking 2 A levels
- IELTS 5.0 or equivalent (with no less than 4.5 in any single band) if taking 1 A level

# University Foundation Programme

The MPW University Foundation Programme is your ideal route to studying for a degree at leading UK, and international universities.

Upon successful completion of the programme, you will achieve an academic standard similar to A levels. In addition, you will have gained essential English language and independent learning skills giving you the perfect platform for success at university and beyond. The programme offers a Business pathway available in a two or three term format, depending on prior qualifications.

## Quick facts



Age: 17+



Maximum class size: 14



Start dates: September or January



Programme length: 2 or 3 terms



Course hours: 21 hours per week



Programme routes: Business

## Academic Entry Requirements

Successful completion of local high school (either 11 or 12 year system) with good grades

English language level:

- September three-term programme 5.0 IELTS or equivalent (with no less than 4.5 in any single band))
- January two-term programme 5.5 IELTS or equivalent (with no less than 5.0 in any single band)

Distinctions

43%

Distinctions and Merits

71%

## Destinations include:

- City, University of London
- Queen Mary, University of London
- Royal Holloway, University of London

## University Progression

There are a wide range of universities that have agreements in place to accept students who have successfully completed the University Foundation Programme including but not limited to those on the map.



# GCSE

GCSE students at MPW may, depending upon their age and circumstances, choose either two-year courses or a one-year course.

Students come to MPW for GCSE courses primarily because of our average of six students per class and absolute guaranteed maximum of nine. Combined with an outstanding programme of pastoral support, we ensure students receive that extra level of personal attention they require for success.

## Quick facts



Age: 14+



Maximum class size: 9



Start dates:

September (two-year) – 5.5 IELTS  
 January (18-month) – 5.5 / 6.0 IELTS  
 September (one-year) – 6.0 IELTS

## GCSE Subjects

|                    |                    |                          |
|--------------------|--------------------|--------------------------|
| Art and Design     | French             | Physics                  |
| Biology            | Geography          | Psychology               |
| Business Studies   | German             | Religious Studies        |
| Chemistry          | History            | Russian                  |
| Chinese            | Italian            | Sociology                |
| Computer Science   | Latin              | Spanish                  |
| Drama              | Mathematics        | Textile Design           |
| Economics          | Music              | Three Dimensional Design |
| English Language   | Photography        |                          |
| English Literature | Physical Education |                          |

Other subjects may be available from time to time.



# Pre-programme

This programme is designed to give students the academic and English skills they need before starting A levels or a university foundation course. In addition to improving their English language skills, they will also gain knowledge in their chosen subjects, as well as learning more about studying and living in the UK.

## At a Glance

- Prepare for GCSEs, A levels or university foundation programmes
- Choose a 2 or 3 term programme
- Study split: approximately 60% English language (IELTS) / 40% subjects
- Access to a wide choice of subjects such as Maths, Sciences and Business
- Assessed through internal testing only
- Available at MPW London, Birmingham and Cambridge

## Why Choose the Programme

- Build knowledge in core subjects in the academic curriculum
- Improve proficiency in written and spoken English
- Develop academic reading and writing skills ready for UK exams
- Gain an enriched understanding of British culture
- Participation in a wide range of co-curricular activities

## Academic Entry Requirements

- Age 16+ (under 16s accepted if in approved accommodation or private fostering services)
- CEFR B1 level or IELTS 4.0 or above, or equivalent – Pearson PTE (29-35), TOEFL iBT (32-34) or Cambridge English Scale (147)

## Quick facts



### Start dates:

#### September:

To start GCSE, A level or Foundation the following January

#### January:

To start GCSE, A level or Foundation the following September

#### April:

To start an English for Academic Purposes (EAP) preparation course

# Pre-sessional English Programme

The Pre-sessional English Programme supports international students who wish to improve their English language skills prior to the new academic year.

The online programme is run over five weeks and helps students to accelerate their EAL learning and improve their English before joining their desired programme of study at MPW. Students on the programme also enjoy guaranteed progression to their MPW course.\*

It focuses on IELTS preparation and Academic English, including each skill (reading, writing, listening and speaking). Students can expect to raise their overall IELTS score by 0.5 and also enjoy guaranteed progression to their MPW course.\*

## Quick facts



### Course hours:

20 hours per week, plus 30-60 mins homework each night



### Class size:

Max. 12 students per online class



Assessed by weekly mini-tests

## Academic Entry Requirements

Students require a minimum IELTS score of 4.5, or equivalent test score according to MPW equivalences. For guaranteed progression to the chosen MPW course the English level should not be more than 0.5 IELTS (or equivalent) lower than the stated entry requirements.

Students will take a diagnostic IELTS test at the beginning of the programme, and another internal IELTS test as part of their end of programme report.

\*Guaranteed progression requires a minimum of 90% programme attendance



# Oxbridge Programme

Oxford and Cambridge are two of the best universities in the world, with an international reputation for academic excellence. Winning a place to study there is a comprehensive and competitive process.

Around 6,600 undergraduates start their first years at Oxford or Cambridge every year and with a lot of hard work and preparation, you can give yourself the best chance of being one of them.

At MPW, in addition to our world-class tuition and personal tutor system, we offer help to prospective Oxbridge candidates in four main areas:



Details of what studying at an Oxbridge college is really like



How to write an effective UCAS application, including sample personal statements



Preparing for and making a great impression at interview



Case studies from students who have been through the Oxbridge application process



# Medicine

Becoming a doctor is an incredibly popular career choice and with around ten applications made for every university place, competition is tougher than ever. It's not enough to have top A level grades and evidence of work experience – to be in with a chance you need a sound knowledge of current medical issues and be able to demonstrate true commitment to a career in medicine.

Aspiring medical students are provided with additional support in four main areas:



Personal statement review



Interview practice



Expert tuition to prepare for specialist tests



Additional lecture series to cover topical issues

Aspiring medics at MPW are automatically enrolled onto our preparation programme free of charge.

“ I am incredibly grateful to my personal tutor. She supported me with my UCAS application and personal statement, going as far as sending it to a doctor to read through. I was also able to have a mock interview with said doctor and I must say this really helped to prepare me for the interviews I had later on. ”

Valerie, from Nigeria. Achieved A\*AA at A level. Now reading Medicine at Queen Mary University of London.

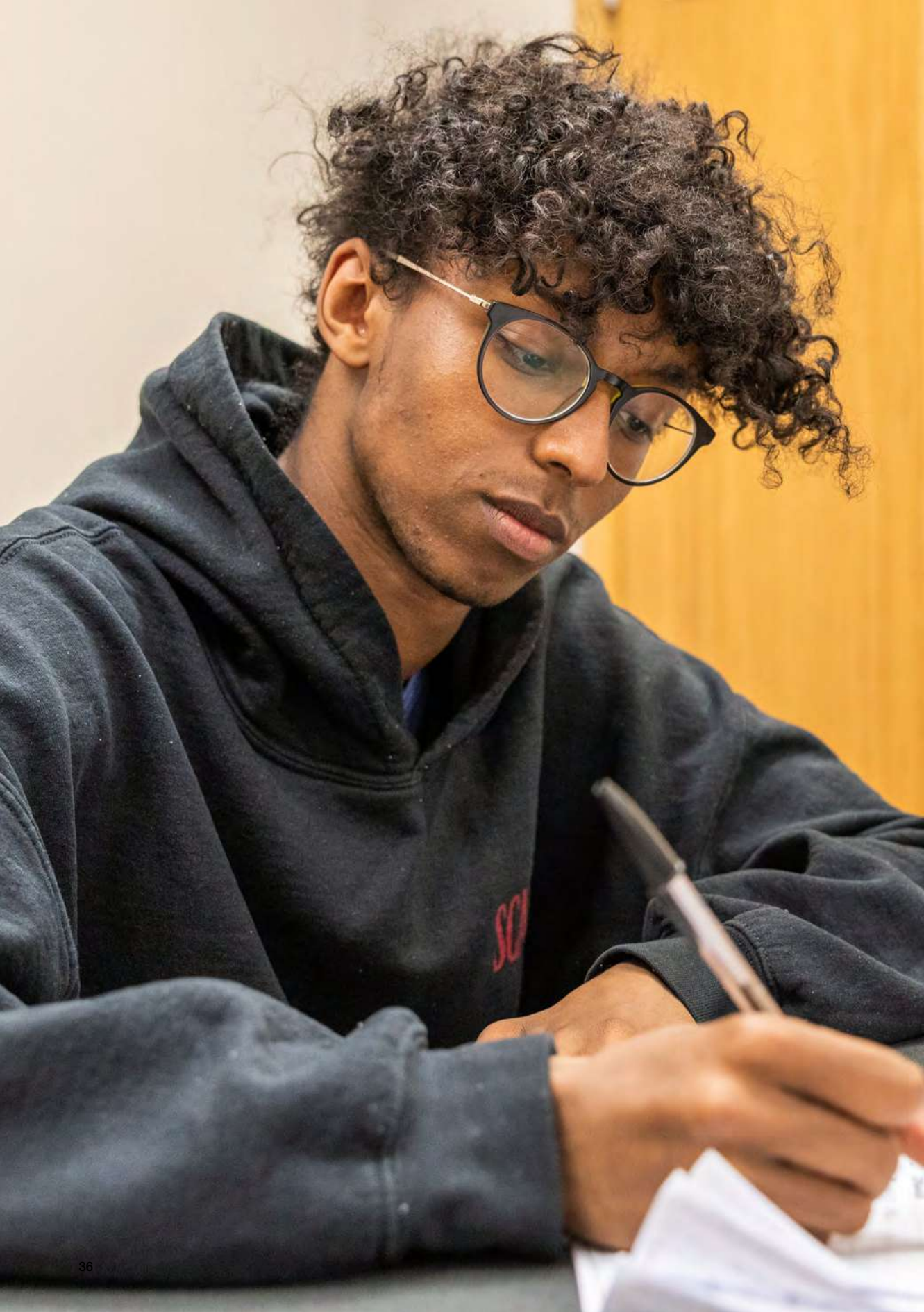


Every year, **Adam Cross** (MPW Birmingham Vice Principal) and **Emily Lucas** (MPW Birmingham Director of Supplementary and University Applications) publish *Getting into Medical School*. This guide is packed with essential advice and useful tips to help land a place at the medical school of your choice, giving you everything you need to embark on your dream career.

132

Medical School Placements in the last five years





# Easter Revision

“ *There’s a lot of focus placed on past papers which really helps you prepare and understand how the exams work.* ”  
Anna, Psychology A level student, Easter Revision MPW London

**MPW offers a broad range of courses and intensive, exam-oriented tuition. It is this expertise which forms the basis of our Easter Revision courses.**

Our tutors are all highly qualified graduates with considerable teaching experience. Many are GCSE or A level examiners and are therefore very knowledgeable of the requirements and approaches demanded by the various examining boards.

Small classes are essential in order to provide the close attention which each student requires. There is an absolute maximum of nine students in a group, with the average usually five or six.

We focus on the following aspects which, in our experience, are central to students’ confidence and academic performance:



Courses are board-and syllabus-specific



Intensive revision of core topics



Emphasis on understanding rather than learning



Development of appropriate question-answering techniques



Improvement of study and revision skills



## Dates for 2024

Week 1: 25 - 29 March

Week 2: 1 - 4 April

Week 3: 8 - 12 April

*Good Friday is 29 March;  
Easter Monday is 1 April.*

# Enrichment and Extracurricular

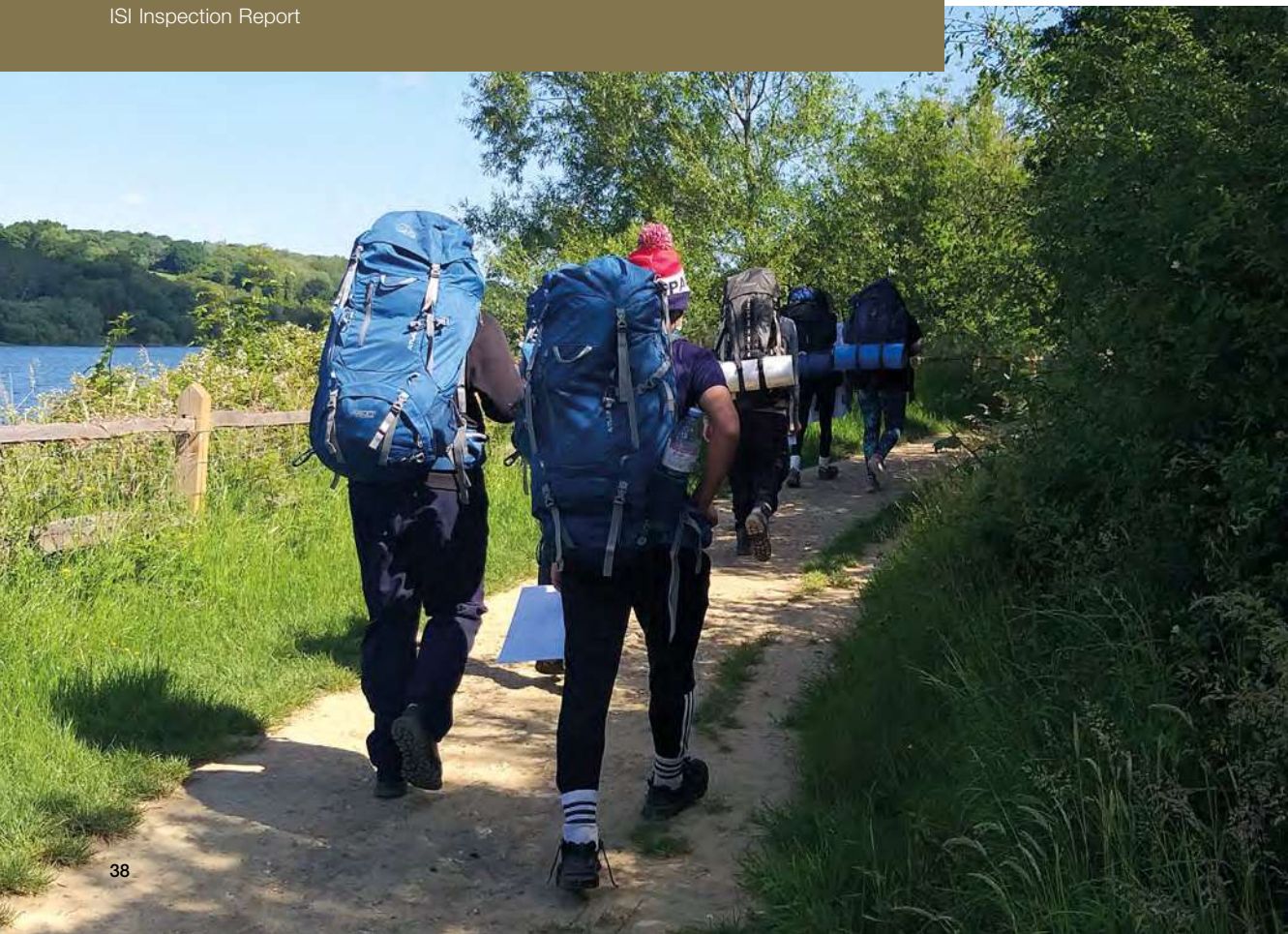
MPW students can choose to take full advantage of a wide range of extracurricular activities and projects on offer at all three colleges. These activities will help to develop your intellectual, sporting and cultural interests – and to make new friends outside the classroom.

Whether you are interested in sport, the arts, music or wellbeing, there will be an activity for you. Plus, there are valuable opportunities throughout the academic year to help you prepare for university and beyond.

\*Clubs/societies may vary between colleges

“The college provides a high number of enrichment opportunities for students. A travel fund allows students to visit many places of interest and the curriculum is enhanced by a wide range of educational visits.”

ISI Inspection Report



## Sport

- Badminton
- Basketball
- Cricket
- Football
- Golf
- Gym
- Modern Jazz Dance
- PE
- Rugby
- Running
- Tennis
- Yoga

## Clubs/Activities

- Beginners Guitar
- Chess Club
- Chinese / Mandarin
- Community Service
- Creative Writing
- Debating Club
- Duke of Edinburgh Award
- Educational Trips / Visits
- Ethics Club
- Extended Project Qualification (EPQ)
- Mindfulness & Wellbeing
- Science Club
- Social Enterprise Group
- Spanish
- Student Council
- Travel Scholarships
- Young Film Academy

## Arts/Drama

- Ceramics
- Drama Club
- Drawing
- Photography

## University and Careers

- Gap Year Fair
- Getting into Medical School
- Oxbridge Preparation
- Principal's Lectures
- UCAS week



# Summer School 2023

The MPW Summer School offer students aged 14-17, the opportunity to study an innovative, high-quality academic programme, including exclusive content developed by EtonX, as well as MPW's own highly-qualified academic team.

Our expertly-designed programmes offer young people the opportunity to explore future careers and traditional academic subjects in refreshing new ways, while also engaging in modern skills-based approaches to learning such as critical thinking and creative problem solving.

Our campuses, based in London and Cambridge, allow students to experience the very best of British culture. Students also enjoy a packed schedule of social and cultural activities to make the most of their time outside of the classroom, plus lectures and career talks given by world experts and leading university academics in their respective fields.

A summer with MPW is unique, unforgettable and transformative.



## At a glance



Two exciting city locations



Exclusive UK programme by EtonX



Industry field trips and career talks



Academic programme designed by MPW



Inspiring lecture series



Cultural and social activities

## Intake dates

25 June\*, 9 July, 23 July

Students can choose to study for 2, 4 or 6\* weeks

\*London only

## Fees

Full: £3,500 for 2 weeks Day only: £2,000 for 2 weeks

To find more about the Summer School, please visit our website.



“ I loved the Eton X courses they taught me lots. Most fun was the experience of having flat mates. I made memories to last a lifetime! ”

Esteban - United Kingdom

# How to Apply

## The Admissions Procedure

1. Complete application form and return with supporting documentation, below:
    - Copy of passport and previous UK visa(s)
    - Copy of any English language qualifications
    - Copies of previous school qualifications/reports/transcripts
  2. Attend an interview with a senior member of MPW staff and sit an entrance test if required. During the interview we will offer expert and honest advice on programme/subject selection and making a competitive university application. A student may be required to sit an English or Maths test depending on their qualifications and the course they are applying for. An interview may take place at MPW, in-country when we are visiting your region or via video call.
  3. Receive a decision on the application (usually within one week).
- If a place has been offered:**
4. Complete and return registration form, consent form and registration fee (£350) to guarantee place.
  5. Pay a deposit (to be refunded in the last term of study).

6. If the student requires a visa, a Confirmation of Acceptance for Studies (CAS) will be issued once the deposit has been received (we are not able to issue a CAS more than six months before the course start date).

Please send all applications to your interviewer or [international@mpw.ac.uk](mailto:international@mpw.ac.uk)

## Visas and Immigration

If you require a visa to study in the UK, please ensure you provide all of the requested documents with your application so they can be assessed by the International Admissions Officer. If anything is missing, we will contact you to request the information.

In order to ensure you have the best support in your home country when it comes to completing a visa application, we strongly recommend that you have an agent, consultant or solicitor that can help you. If you don't have someone to help you through the process and check you have the correct documents, please speak to your interviewer.

If you have any questions, please ask your interviewer to direct you to the International Admissions Officer who can give you advice on student immigration to the UK. For the most up to date information, please visit the UK Visas and Immigration website.

“International students settle into the MPW community quickly. They appreciate the high-quality, small-group and individual support they get from personal tutors.”  
Ofsted Report

# Annual Fees

|  | MPW<br>London | MPW<br>Birmingham | MPW<br>Cambridge |
|--|---------------|-------------------|------------------|
| A levels (2-year course)                           | £35,700       | £25,800           | £29,000          |
| A levels (18-month course, termly fee)             | £11,900       | £8,600            | £9,700           |
| A levels (1-year course)                           | £37,400       | £27,800           | £32,700          |
| GCSE   | £35,700       | £25,800           | £29,000          |
| Pre-programmes                                     | £28,300       | £20,700           | £23,000          |
| UAL Foundation Diploma in Art and Design           | £28,300       | –                 | –                |
| Art Portfolio Preparation Programme                | £28,300       | –                 | –                |
| NCUK International Foundation Year                 | £28,300       | £20,700           | £23,000          |
| NCUK International Foundation Year (January start) | –             | £20,700           | –                |
| MPW University Foundation Programme (3 terms)      | £27,000       | –                 | –                |
| MPW University Foundation Programme (2 terms)      | £19,000       | –                 | –                |

## Other Fees

|                  |        |        |        |
|------------------|--------|--------|--------|
| Registration fee | £350   | £350   | £350   |
| IELTS (per term) | £2,000 | £1,800 | £2,000 |

## Deposits

|   |         |        |        |
|---|---------|--------|--------|
| Deposits are payable upon registration and used as payment towards final fees | £10,000 | £8,000 | £9,000 |
|---|---------|--------|--------|

## Accommodation

|                             |                       |                       |                       |
|-----------------------------|-----------------------|-----------------------|-----------------------|
| MPW full boarding           | £28,350               | –                     | –                     |
| Independent living options* | £20,000 to<br>£24,000 | £13,250 to<br>£17,000 | £13,500 to<br>£18,000 |

\*Meal plans are available in Birmingham and Cambridge

# M|P|W

Schools and Colleges

## *London*

90-92 Queen's Gate  
London SW7 5AB

## *Birmingham*

16-18 Greenfield Crescent  
Birmingham B15 3AU

## *Cambridge*

3-4 Brookside  
Cambridge CB2 1JE



+44 (0)20 7835 1355



international@mpw.ac.uk



www.mpw.ac.uk



/MPWInternational



/mpw\_international



/mpwintl



/school/mander-portman-woodward-limited

---